

A woman with dark hair in a ponytail is looking at a rack of clothes in a store. The scene is dimly lit with blue and teal tones. A diagonal line cuts across the image from the top right to the bottom left.

Herbalife Textiles Project

Link Presentation

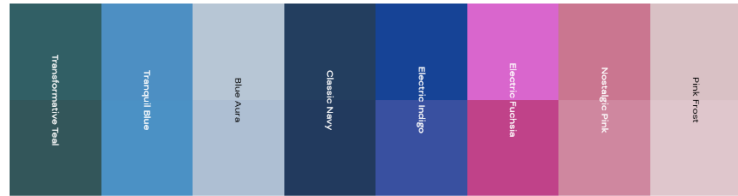
August 2025



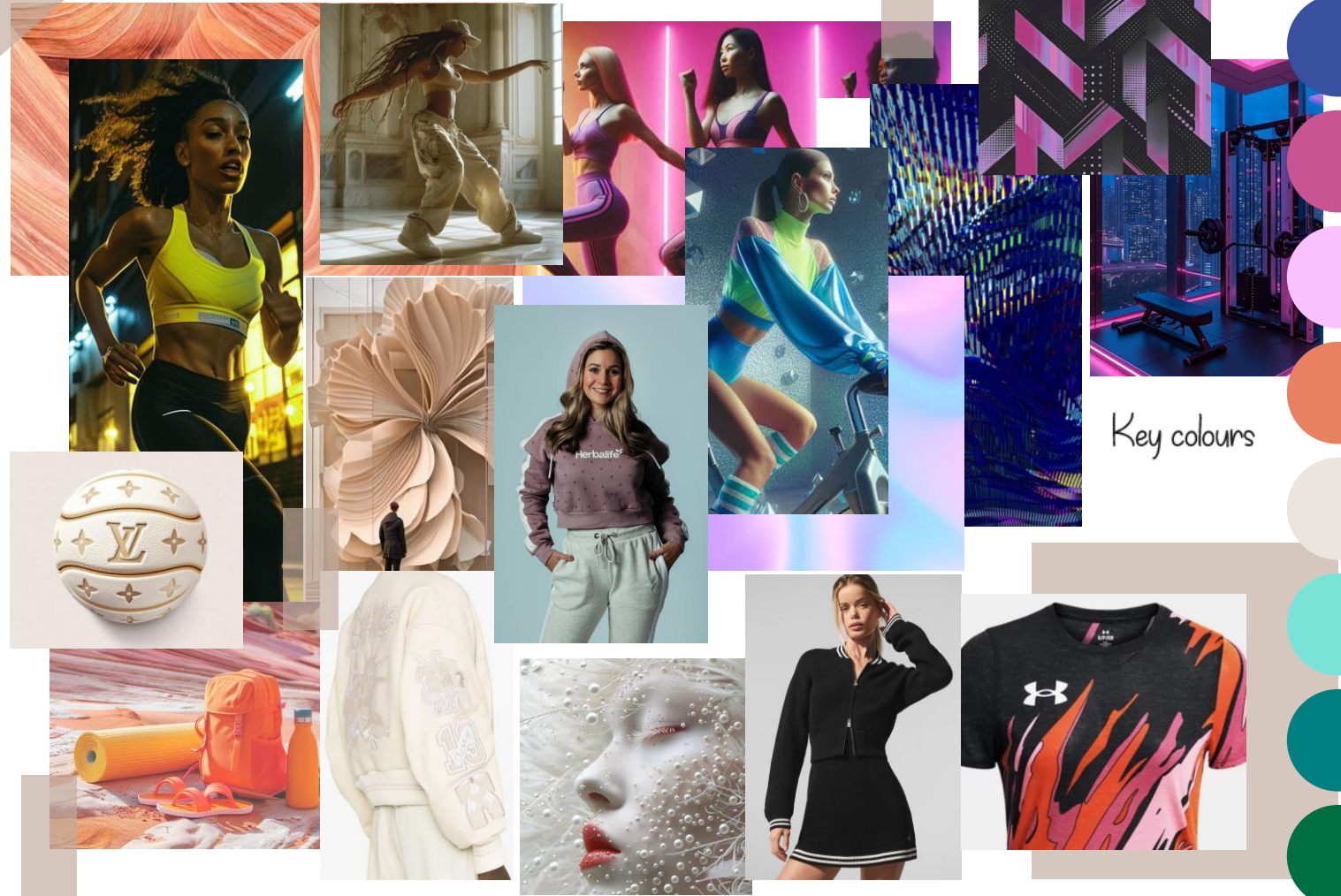
Response to Creative Brief

2026 Trends Inspirations & Colours

Color Name	Color Swatch
Primal Green	#2E5436
Sublime Green	#6B8E23
Amber Haze	#D4C03E
Dusted Olive	#A08040
Chocolate Sauce	#5D3A3A
Future Grey	#4F6070
Lava Red	#E74C3C
Robust Red	#C0392B



Press Play for Colour of the year 2026 – Transformative Teal



Key colours

A person's leg and foot in a sneaker stepping on grass at night, with a diagonal light flare.

Sport Textiles Ideation

New Concept Designs

White Stripes >

Female

White Stripes Polo

Ref.^a 001

PRICE: €0.00



White Stripes >

Male

White Stripes T-Shirt

Ref.^a 002

PRICE: €0.00



White Stripes >

White Stripes T-Shirt

Ref.^a 003

PRICE: €0.00



Female/Male

White Stripes Hoodie

Ref.^a 004

PRICE: €0.00



Pink for Man & Woman >

T-Shirt

Ref.ª 005

PRICE: €0.00



Male/Unisex



Pink for Man & Woman >

Pink Female Set 1

Ref.^a 006

PRICE: €0.00



Pink Female Set 2

Ref.^a 007

PRICE: €0.00



Pink Female Set 3

Ref.^a 008

PRICE: €0.00



Female

Alter Top >

Female

Alter Top Woman 1

Ref.^a 009

PRICE: €0.00



Reflective
Effect
Herbalife
H24 logo



Personalisation >

Alter Top Woman 2

Ref.ª 010

PRICE: €0.00



Female

Alter Top Woman 3

Ref.ª 011

PRICE: €0.00



Alter Top >

Male

Alter Top Men 1

Ref.ª 012

PRICE: €0.00



Alter Top >

Alter Top Men 2

Ref.^a 013

PRICE: €0.00



Male

Sleeves Sweats & Polos >

Sleeves Sweats Woman 1

Ref.^a 014

PRICE: €0.00



Female

Sleeves Sweats Woman 2

Ref.^a 015

PRICE: €0.00



Sleeves Sweats & Polos >

Sleeves Sweats Men 1

Ref.^a 016

PRICE: €0.00



Male

Sleeves Sweats Men 2

Ref.^a 017

PRICE: €0.00



Hoodies Tops >

Female

Hoodies Woman

Ref.ª 018

PRICE: €0.00



Hoodies Tops >

Hoodies Men 1

Ref.^a 019

PRICE: €0.00



Male

Hoodies Men 2

Ref.^a 020

PRICE: €0.00



Exact Color Sets>

**Exact Color
Sets Men 1**

Ref.^a 021

PRICE: €0.00



**Exact Color Sets
Woman 1**

Ref.^a 022

PRICE: €0.00



**Exact Color Sets
Men 2**

Ref.^a 023

PRICE: €0.00



Female/Male

Unisex Cap >

Male/Unisex

Standard Cap

- Material: 100% Polyester/Jersey Material
- Dry Fit/Spandex (elastic material)
- Branding: Need color & design options
- . Reflective Logo branding

PRICE: 0,00€



Visor Hat

- Material: 100% Polyester/Jersey Material
- Dry Fit/Spandex (elastic material)
- Branding: Need color & design options
- . Reflective Logo branding

PRICE: 0,00€



Unisex Cap >

Male/Unisex

Unisex Cap

- Material: 100% Polyester/Jersey Material
- Dry Fit/Spandex (elastic material)
- Branding: Need color & design options
- Reflective Logo branding

PRICE: 0,00€





Casual Textiles Ideation

New Concept Designs

Turtle Neck Sweatshirts >

Turtle Neck Sweatshirts

Ref.ª 024

PRICE: €0.00



Turtle Neck Sweatshirts >

Turtle Neck Sweatshirts

Ref.^a 025

PRICE: €0.00



Reflective
Effect
Herbalife
Tri-Leaf



Special Details >

Unisex

Hoodies

Ref.ª 026

PRICE: €0.00



Faded Fabrics Degradé »

Faded Fabrics Degradé Woman

Ref.^a 027

PRICE: €0.00



Female/Male

Faded Fabrics Degradé Men

Ref.^a 028

PRICE: €0.00



Located Special Details >

Male

Special Details Men 2

Ref.^a 029

PRICE: €0.00



Reflective
Effect
Herbalife
H24 logo



Located Special Details >

Special Details Men 1

Ref.^a 030

PRICE: €0.00



Female/Male

Special Details Woman 1

Ref.^a 031

PRICE: €0.00



Located Special Details >

Special Details Woman 2

Ref.ª 032

PRICE: €0.00



Baseball Style >

Male

Baseball Polo Shirt Men

Ref.ª 033

PRICE: €0.00



Baseball Style >

Female

Baseball Polo Shirt Woman

Ref.ª 034

PRICE: €0.00



Loose Polos No Buttons >

Polo 1

Ref.^a 035

PRICE: €0.00



Polo 2

Ref.^a 036

PRICE: €0.00



Male

Cycling Collection >

Male/Unisex

Cycling Shorts and Tank Tops

- Material: 100% Polyester/Jersey Material
- Dry Fit/Spandex (elastic material)
- Branding: Need color & design options
- Reflective Logo branding

PRICE: 0,00€



Cycling Shirt

- Material: 100% Polyester/Jersey Material
- Dry Fit/Spandex (elastic material)
- Branding: Need color & design options
- Reflective Logo branding

PRICE: 0,00€

Cycling Collection >

Male/Unisex

Cycling T-Shirt

- Material: 100% Polyester/Jersey Material
- Dry Fit/Spandex (elastic material)
- Branding: Need color & design options
- Reflective Logo branding

PRICE: 0,00€



Cycling Hoodie

- Material: 100% Polyester/Jersey Material
- Dry Fit/Spandex (elastic material)
- Branding: Need color & design options
- Reflective Logo branding

PRICE: 0,00€



Cycling Collection >

Male/Unisex

Cycling Jacket

- Material: 100% Polyester/Jersey Material
- Dry Fit/Spandex (elastic material)
- Branding: Need color & design options
- . Reflective Logo branding

PRICE: 0,00€



Cycling Shirt

- Material: 100% Polyester/Jersey Material
- Dry Fit/Spandex (elastic material)
- Branding: Need color & design options
- . Reflective Logo branding

PRICE: 0,00€



Why Link?

Client first,
always

Forward-thinking brands are demanding more from their procurement partnerships. Our proactive mindset, agile approach and desire to share knowledge, mean we put our clients at the heart of everything we do.

Distinctly
dependable

Privately owned, profitable and a proven track record for exceeding expectations. 20+ years of improving efficiencies, driving sales, enhancing a brand's reputation – our clients trust us to always find the best way.

An eye on
the future

Technology, materials and supply chains are constantly evolving. By keeping a long-term view, and applying the very best in new technology, we help our clients combine a profitable present with a sustainable future.

A force
for better

Global climate change is one of the greatest challenges we all face today. Ours is an inherently wasteful industry, but the potential for positive change is there and we have a responsibility to lead it.

Contact Us >



Ana Bobone
Key Account Director

ana.bobone@link-worldwide.com
+(351) 918 674 879



Tushar Sable
Country Account Manager India

tushar.sable@link-worldwide.com
+91.22.4880.8546 / +91.93226 96524



Angela Pereira
Project Manager

Angela.Pereira@link-worldwide.com
+(351) 965 021 634

